



KI UTA KI TAI WAKA CHALLENGE 2025

Marakura Yacht Club, Te Anau

Saturday 25th October 2025

Ngā Kete Mātauranga Pounamu Charitable Trust

Pānui #1

EVENT SUMMARY

Kōrari the Māori Public Health team at Ngā Kete Mātauranga Pounamu Charitable Trust in conjunction with Ōraka Aparima Rūnaka invite you to Ki Uta Ki Tai Waka Challenge to be held at the Marakura Yacht Club, Te Anau on Saturday 25th October 2025.

Ki Uta Ki Tai Waka Challenge is run annually on the beautiful Lake Te Anau and is intended to be a fun but competitive event to support whānau hauora through waka ama. The event is a full day of fun racing, health stalls, coffee, kai vendors and prize giving. It also provides a warmup opportunity before the Te Waka o Aoraki Regional Sprints. We welcome you and your whānau to join us for this event.

EVENT SCHEDULE

| | |
|---------|---|
| 7:30am | Safety boat meeting inside Yacht Club |
| 7:45am | Administration desk opens for registrations |
| 8.00am | Karakia + Welcome |
| 8.15am | Race 1 briefing + Safety checks for 5 km W1 + W2 |
| 8:30am | Race 1 starts: 5km W1 + W2 |
| 9am | Race 2 briefing + Safety checks for 10 km W1 + W2 |
| 9:15am | Race 2 starts: 10km W1 + W2 |
| | **If limited entries for both races 5km + 10km will combine |
| 10:15am | Sprints race briefing – all rangatahi kaihoe and all other division steerers for these races to attend. |
| 10:30am | Waka safety checks for sprints |
| 10:45am | Race 3 – 500m Rangatahi W6 starts |
| 11:15am | Race 4 – 1km Rangatahi starts |

| | |
|----------------|---|
| 11:45am | Race 5 – 500m W6 all divisions |
| 12:15pm | Race 6 – 1km all divisions |
| 12:45pm | Race 7 – W6 10km race briefing + Safety checks |
| 1pm | Race 7 – W6 10km starts |
| 2:15pm | Race 8 – W6 20km race briefing + Safety checks |
| 2:30pm | Race 8 – w6 20km starts* |
| | <i>Kaihoe to be ready from 2pm, race will start when Race 7 finishes</i> |
| 5pm | All racing finished |
| 5:30pm | Prize giving + Closing karakia |

*****SCHEDULING & TIMING IS SUBJECT TO CHANGE –
PLEASE BE READY TO RACE 30 MINUTES AHEAD OF YOUR RACE TIME**

RACE DAY INFORMATION

Friday registration: The administration desk will be open for early check-in inside the Yacht Club between 4pm-5pm on Friday 24th October 2025.

Trailer parking: Trailer parking will be available at the rear of the Marakura Yacht Club carpark. Due to restrictions, this will only be available for trailer drop off – you will need to park your car elsewhere for the day.

Car Parking: Parking is available along the shore side in the public area. Please **do not** park in the Marakura Yacht Club carpark.

Food: We encourage you to bring your own healthy kai, however a small range of food vendors will be available onsite to purchase healthy kai.

Toilets: Toilets are located inside the Marakura Yacht Club. Note: Unfortunately, there are **NO** showers available at the club.

First Aid: First Aid will be available at the check in tent.

Rubbish/Recycling: Please recycle where possible - rubbish bins will be available.

Alcohol/Drug/Vape/Smokefree: Alcohol, smoking, vaping and any other substance use will not be permitted at this event.

Merchandise: T-shirts will be available for sale at the administration desk.

Water Station: A water station will be available at the lakeside gazebo desk.

Sunscreen: Sunscreen will be available on site.

BYO Gazebo: Please feel free to bring your own gazebo and foldout chairs for your paddlers and supporters

Prize giving: Prize giving will take place 30 minutes after the last race ends.

WAKA DROP OFF & SAFETY CHECKS

Waka Drop off:

- Waka drop off and strapping up will take place from **1pm onwards on Friday 24th October**. Kaimahi will be on site to direct and assist with this process. Otherwise on the morning of the event from 7.00am. All waka need to be strapped up and lakeside by 8.30am. **This year if you are bringing waka please bring your own tyres and take them home with you!**

Safety Checks:

- All waka must undergo a safety check and be officially marked prior to racing. Any waka that has not been marked will **not** be permitted to participate in the race.

RACE RULES

All entrants must be familiar with the Waka Ama New Zealand race and safety rules. Refer to the following link for more information: [Waka Ama NZ Race Rules](#)

AGE DIVISIONS & RACE EVENTS

| WAKA | DISTANCE | DIVISIONS | GENDER |
|------|-------------|---|--------------------|
| W1 | 5km, 10km | Open, Master, Senior Master, Golden Master | Men & Women |
| W2 | 5km, 10km | Open, Master, Senior Master, Golden Master | Men & Women, Mixed |
| W6 | 250m | J16, J19, Intermediate | Boys, Girls, Mixed |
| W6 | 500m (turn) | Intermediate | Boys, Girls, Mixed |
| W6 | 500m, 1km | J16, J19, Open, Masters, Senior Masters, Golden Masters | Men, Women, Mixed |
| W6 | 10km | J16, J19, Open, Masters, Senior Masters, Golden Master | Men, Women, Mixed |
| W6 | 20km | J19, Open, Masters, Senior Masters, Golden Masters | Men, Women, Mixed |

FEES

Fees for this event are per person by race division.

Adult fees: \$30.00 per race

Rangatahi fees (Intermediate, J16, J19): \$10.00 per person.

PER PERSON PER RACE (charged for each race entered)

| Event | Age Division | Cost |
|------------------|---|----------|
| W1 + W2 5km/10km | Open*, Master, Senior Master, Golden Master | \$30.00 |
| W6 250m/500m/1km | Intermediate, J16, J19, | \$10.00 |
| W6 500m/1km | Open*, Master, Senior Master, Golden Master | \$30.00 |
| 10km | Open, Master, Senior Master, Golden Master | \$30.00* |
| 20km | Open, Master, Senior Master, Golden Master | \$30.00* |

***Note:** Open division is 16yrs+

ONLINE ENTRIES & PAYMENT

- Online entries are to be completed using the Waka Ama NZ online entry system.
- All entries to be completed through your club admin – contact your club admin to process your entry

- No entries on the day, no exceptions
- Entries close **5pm** on **Tuesday 21st October 2025**
- Rosters close on **Wednesday 22nd October 2025**. Rosters must be completed by close date, no exceptions
- Once entered, payment can be made online to:

Te Ara a Kewa Waka Ama Trust

03-1355-0770244-00

Use your club, team name and division as your reference

SAFETY REQUIREMENTS

- All waka must be Safety Checked
- All Junior age divisions must wear life jackets
- Senior (Open and above) PFD's must be on board.
- Waka must have the following safety equipment:
 - o PFD - Personal Floatation Device (per person)
 - o Bailers and Spare strapping
 - o Flare or cell phone in waterproof case
 - o Spare Paddle - 2 for a W6
 - o Tow Rope (W6)
 - o Spray Skirts (Weather and conditions pending)

INDIVIDUAL & TEAM WAIVERS

- Team waivers must be completed by all paddlers/teams prior to event
- All paddlers U18 must have their waiver signed by their parent/guardian
- Waivers can be sent to karina.davis-marsden@nkmp.nz or handed in at the administration desk on Friday afternoon or on race day.
- Team waivers can be found on the Waka Ama NZ [website](#).

CONTACT INFORMATION

- All enquiries please email: karina.davis-marsden@nkmp.nz or nadine.young@nkmp.nz
- All urgent matters please call: **03 2145 260**

COURSE MAPS

MAP 1: W1 & W2 (beach start with kaihoe turning at 2.5km buoy, following the course back. Finish line at the Marakura Yacht Club wharf.



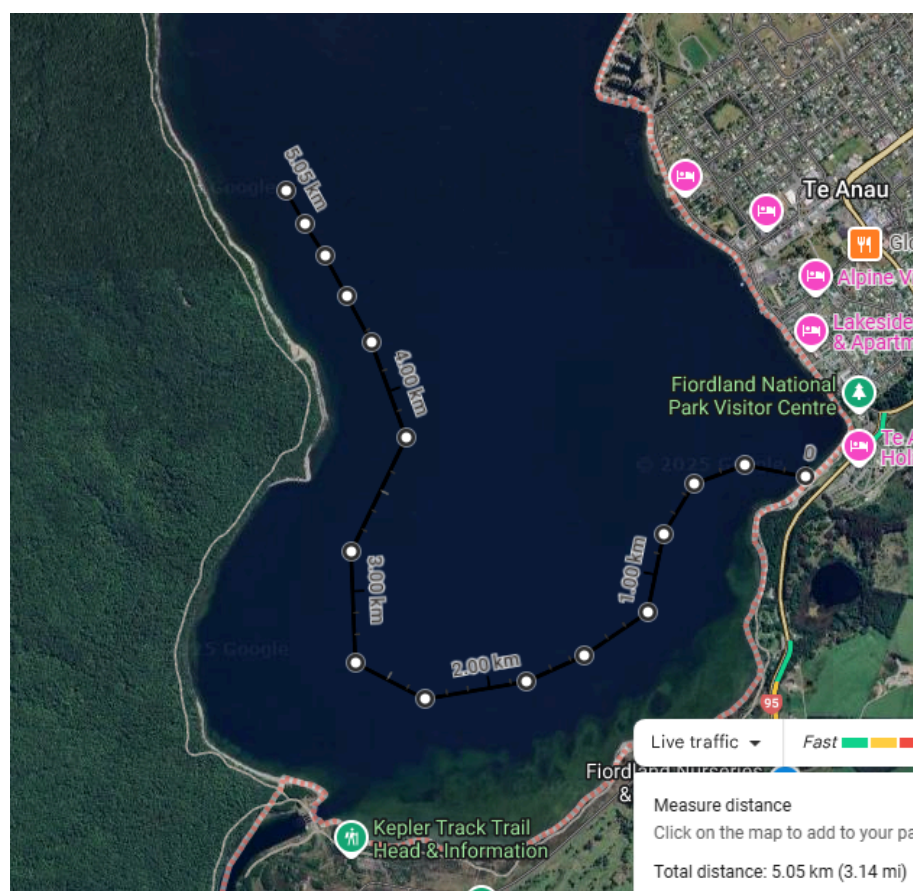
MAP 2: Rangatahi Race's 250m & 500m (with a turn). Race starts out on the water paddling into the shoreline with the finish line at the Marakura Yacht Club wharf.



MAP 3: 500m straight sprint - start out on water heading towards the shoreline. The finish line is the Marakura Yacht Club wharf. 1000m is the same course, beach start – turning at the 500m buoy with the finish line the Marakura Yacht Club wharf.



MAP 4: 10km race. Beach start, turning point at 5km buoy and following the course back. The finish line is the Marakura Yacht Club wharf.



Map 5: 20km race – beach start, turning at the 10km buoy and following the course back. Finish line the Marakura Yacht Club wharf.

